

# Health Career Display



## ***New for 2014-15***

A Round One and Round Two has been added. Round One was added to rate the display only. The display should be designed to “stand alone” so that anyone viewing the display would learn about the career/career cluster without having someone there to speak or direct a person on how to interact with the display. The top displays will advance to Round Two for the presentation. National HOSA will no longer provide the tri-fold displays for competitor use. Competitors must bring their own. Paper and electronic methods (tablet, laptop, smart phone) are allowed for notecards.

**Purpose:** To encourage Health Science students to improve their ability to present themselves and communicate career information to others.

**Description:** Teams consisting of two (2) competitors shall develop a visual display of a specific career or cluster of careers in healthcare. The display allows the students to express ideas through an artistic medium to highlight the benefits of a particular career focus. The students may also be judged on their ability to present themselves and communicate the career information to others.

**Dress Code:** Competitors must be in official HOSA uniform or in proper business attire. Bonus points will be awarded for [proper dress](#). Both team members must be properly dressed to receive bonus points.

- Rules and Procedures**
1. Competitors in this event must be active members of HOSA-Future Health Professionals, in good standing in the category in which they are registered to compete (Secondary or Postsecondary/Collegiate).
  2. Competitors must be familiar with and adhere to the “[General Rules and Regulations of the National HOSA Competitive Events Program](#) (GRR).”
  3. The display must be presented by a team of two. One healthcare career or a cluster of related health careers may be presented.

### **The Health Display**

4. The display is as integral part of the event presentation, but must stand alone as an effective illustration of the chosen career or career cluster. Teams will be judged on how effectively the display informs about the career or career cluster.
5. The work **must** be the work of the competitors, including the artistic aspects of the display. Allowable artwork may include:
  - Competitor produced illustrations, designs, and/or computer-generated graphics.
  - Clip art or other graphics used in compliance with copyright laws.
  - Photographs used in compliance with copyright laws.
  - Computer or machine generated lettering.

6. The display uses a single wall tri-fold presentation display board that is 48" x 36" unfolded, in any color, made of foam or corrugated cardboard. It must be able to stand on a standard conference table furnished on site. If 8 ft. tables or banquet rounds are used, there will be two displays per table. In addition to the presentation board, the display may include models, mannequins, pamphlets, brochures, or any other method or combination of physical objects or props to display the project.
7. Computers and electronics may NOT be used. Electricity may NOT be used.
8. DISPLAY MEASUREMENTS:  
  
Once positioned on the table with three-dimensional display items, the maximum dimensions are:  
  
HEIGHT: 36 inches      WIDTH: 48inches      DEPTH: 24 inches  
  
The display will be measured by the Section Leader or Event Manager before judging begins, from a beginning point to the furthest point of the display.
  - Height will be measured from the tabletop to the highest point of anything on the display.
  - Width will be measured from the widest point of anything on the display to the opposite point.
  - Depth will be measured from the widest point of anything on the display to the opposite point.
  - Nothing may overlap the sides of the display table, with the exception of the table drape.
  - Dimensions include models, mannequins and all other display items.
  - Information or display items outside the dimensions will be considered part of the display and subject to point deductions.
9. The competitor is responsible for the safety and proper functioning of all equipment they bring to this event. The competitor *may not* use any flames, body fluids, living organisms, sharps, or potentially hazardous equipment/materials. Invasive procedures and skin puncturing are **prohibited**.

### The Competitive Process

10. The team will have **fifteen (15) minutes to assemble the display**. Parts of the display may be done prior to competition. The time for assembly is to set up what the team has previously created in preparation for Round One judging.
11. **ROUND ONE DESCRIPTION:** Round One will be a preliminary round and competitors will not attend. Judges will view the assembled displays and will use the preliminary screening rubric to rate each display.
12. The top secondary and postsecondary/collegiate teams from the preliminary round will advance to Round Two, for the oral presentation.
13. **ROUND TWO DESCRIPTION:** The two (2) member team will report back to the display at their assigned appointment time to present a five (5) minute prepared oral presentation to the judges. Note cards are permitted during the oral presentation. Electronic notecards (on a smart phone or tablet) are permitted. The presentation may include but is not limited to why they chose this career/career cluster, what they

learned by researching this career/career cluster, what forms of research they used to complete the display, and what they included on the display and why.

14. Costumes and hand-held props are not permitted during the oral presentation.
15. **USE OF DISPLAY DURING PRESENTATION:** Visuals or display items used during the presentation portion of the event may be touched or picked up BUT **MUST** remain contained within the dimensions of the display. **Items removed from the display will be considered outside the dimensions of the display and subject to point deductions.**
16. Each team that advances to the presentation round will be judged on their ability to communicate information to the judges about the career area. During the five (5) minute prepared presentation, a time card will be shown with one (1) minute remaining and the presentation will be stopped at the end of the 5 minutes.
17. No equipment/supplies (except tables) will be provided for this event. All equipment/supplies needed must be provided by the team. It is the team's responsibility to ensure that all equipment is in working condition.
18. All competitors in this event at the National Leadership Conference are expected to attend the HOSA Showcase for this event. The Showcase will take place between Round 1 and Round 2. Team members will stand with their displays and share event experiences with conference delegates. Team members who do not advance to Round 2 will take their displays at the conclusion of the Showcase. Round 2 finalists will take their displays after Round 2 judging is complete.
19. In the event of a tie, a tie-breaker will be determined by the areas on the rating sheet section(s) with the highest point value in descending order.

**Competitor Must Provide:**

- Event guidelines – one per team (orientation)
- Display (48" x 36" tri-fold board)
- Index cards or electronic notecards for presentation (optional)
- Plain, white cloth table drape (optional)

**Required Personnel (Per Section):**

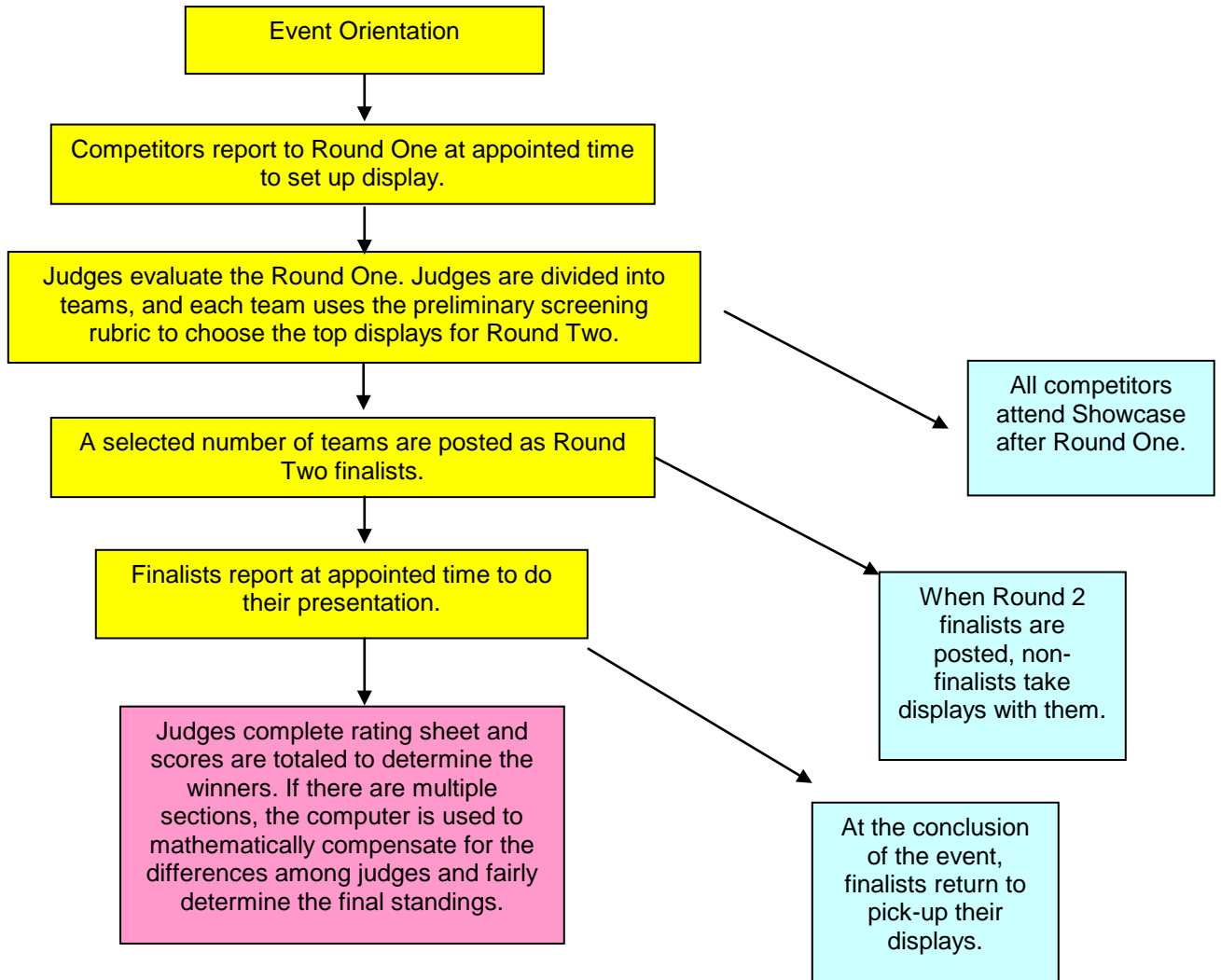
1. One Event Manager per event
2. One Section Leader per section
3. One Timekeeper per section
4. One-two Judges per section – one should be a health professional.
5. One-two event assistants per section
6. One QA to provide quality assurance for the event by ensuring that the guidelines are followed and all event documents are complete.

**Facilities, Equipment and Materials (Per Section):**






- One table per team (6' tables) or two teams per table (8' tables) or banquet rounds, usually placed in one long row per section.
- Two - three chairs per display or table (for judges during the competitor presentation.)
- Calculators (if needed), clip board and pencils for judges
- Tape measure

- Team numbers for tables
- Rating sheets – one per judge per team
- Evaluation Forms – competitor, judge, and personnel
- #2 lead pencils with eraser to complete evaluations
- Flash card for 1 minute remaining

**Event Flow Chart**



**Icon Key**

	Team event – Minimum and maximum (if greater than 2) number of team members.
	Plagiarism or copyright violation is prohibited.
	A computer is used at the NLC to provide a statistically fair method for balancing scores when multiple sections are scheduled.
	At the NLC, a Showcase will be offered for this event.
	Round One scores are used to advance competitors to Round Two at the NLC.

**Event Process Explanation:**

- Set-up 15 minutes<sup>1</sup> ie. 8:00 – 8:15am
- Round One Judging (rubric) 1 hour 8:15 – 9:15
- Showcase (all teams) 1 hour<sup>2</sup> 9:30 – 10:30
- Round Two Posted<sup>3</sup> 10:30
- Round Two Presentations & Judging<sup>4</sup> 2 hours 10:45 – 12:45

<sup>1</sup> Brief judge orientation regarding use of the rubric takes place during the set-up

<sup>2</sup> Judge meal/orientation for Round Two takes place and Round Two finalists names are determined during the Showcase.

<sup>3</sup> Non-finalists will take their displays with them.

<sup>4</sup> Finalists return at the conclusion of the event to pick up their displays. Displays not picked-up will be discarded.

**Event Personnel Implementation Notes:**

- Each row of tables should be a different section and should be labeled (i.e.: section 23, 24 & 25)
- Each table should be labeled (i.e.: table A, B, C, D, etc.)
- Each table will have 1-2 displays depending on the size of the tables used
- Use the competitor list to assign each team to a section and table and make index cards to distribute to the teams during check-in. This will allow each team to go straight to their table to set up. (i.e.: 23-T would be section/row 23 table T)

## HEALTH CAREER DISPLAY JUDGE'S RATING SHEET

Section # \_\_\_\_\_ Team # \_\_\_\_\_

Level \_\_\_\_\_ SS \_\_\_\_\_ PS/Collegiate

Judge's Signature \_\_\_\_\_

Items Evaluated	Points Possible					Points Allocated
	Superior	Excellent	Good	Fair	Poor	
1. <b>Oral Presentation</b>						
Career information presented in a clear and concise manner.	10	8	6	4	2	
Oral presentation demonstrates insight and a deep understanding of the career or career cluster.	10	8	6	4	2	
Team members were able to share stories, examples, and experiences that illustrate the career or career cluster.	10	8	6	4	2	
A variety of methods were used to complete the career research.	5	4	3	2	1	
Voice (volume/grammar) and enthusiasm.	10	8	6	4	2	
Appearance, poise, eye contact, gestures.	10	8	6	4	2	
2. <b>Display</b>						
Artistic/design value	5	4	3	2	1	
Creativity and originality	10	8	6	4	2	
Display information was easy to follow, neat, concise and spelled correctly.	10	8	6	4	2	
Display provides an overview with accurate and important information that clearly describes the career/cluster.	10	8	6	4	2	
3. <b>Display was within listed dimensions</b>						
<i>Ten points are awarded if the display is within the proper dimensions and the display guidelines/restrictions were followed.</i>	10					
<b>TOTAL POINTS -- Possible/Awarded</b>	100	72	54	36	18	

## HEALTH CAREER DISPLAY

### Round One Screening Rubric

The event guidelines include the following instructions for judging this event:

Judges will view all the assembled displays. For Round One screening, judges will use the following rubric to separate displays into four groups (4, 3, 2, and 1) to correspond with the numbers and criteria below. The top scoring displays based on the below criteria will advance to the Round Two presentation, where the full Judges Rating Sheet (found on page 6 of these guidelines) will be used.

*\* Note: These instructions do not apply when there are fewer than 15 displays to be judged. When there are fewer than 15 displays in a division, all competitors will participate in the Round Two presentation.*

4

- Great artistic/design value
- Great creativity and originality
- Display information is easy to follow, neat, concise, and spelled correctly
- Display provides accurate and important information about career/cluster
- Display IS within listed dimensions

3

- Good artistic/design value
- Good creativity and originality
- Display information is mostly neat, concise, and minor spelling errors
- Display provides mostly accurate and important information about career/cluster – but some minor areas are missing

2

- Moderate artistic/design value
- Moderate creativity and originality
- Display information is somewhat messy and serious spelling errors
- Display provides some accurate and important information about career/cluster – major areas are missing

1

- Lacks artistic/design value
- Lacks creativity and originality
- Display information is messy with many spelling errors
- Display lacks accurate and important information about career/cluster
- Display NOT within listed dimensions